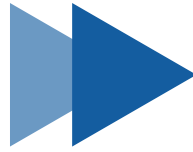




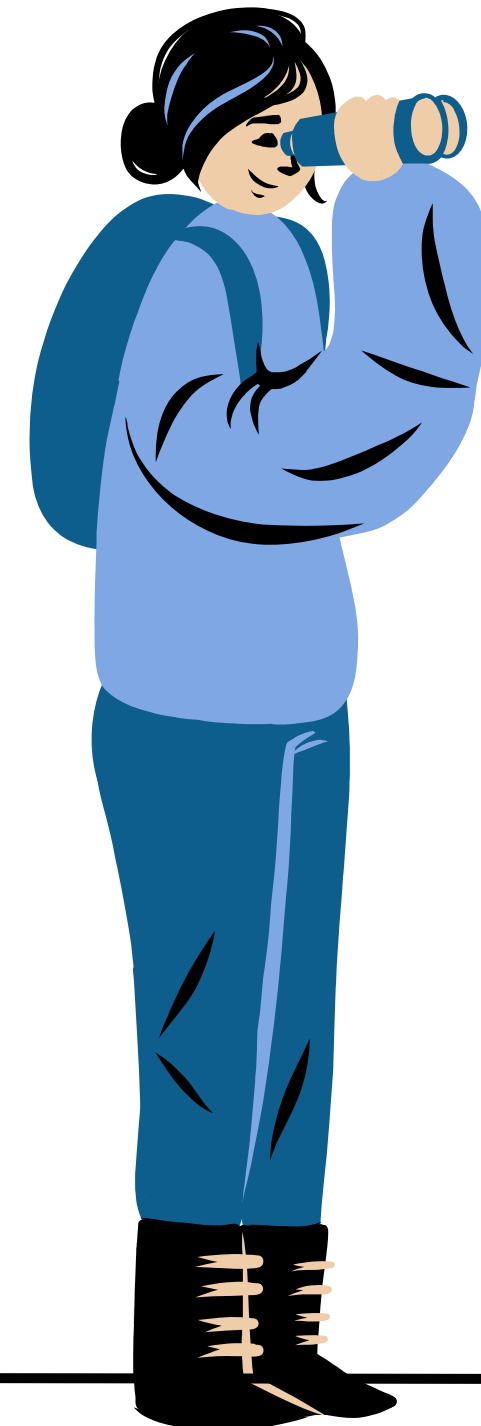
WIKI SITE FEEDBACK RESULTS





What and why

- Reorganize the Discovery wiki/confluence page
- New information because of Primo VE
- Old/information because Primo BO no longer applies
- Difficult to navigate/search for information



PROPOSED CHANGES

ULMS link

ULMS Discovery

Committee Members

- Christian Ward, Sacramento (Chair, July 2021 – June 2022)
- Ian Chan, San Marcos (Vice-Chair, July 2021 - June 2022)
- Christine Holmes, San Jose (Member, July 2020 – June 2022)
- Cathy Outten, Long Beach (Member, July 2020 - June 2022)
- Hannah Lee, Dominguez Hills (Member, July 2021 - June 2023)
- Julie Shen, Pomona (Member, July 2021 - June 2023)
- David Walker, CO Ex Officio

AY 2021-22 Planning

- Meetings
- Primo VE Evaluation

Task Forces

- Analytics Joint Task Force
- Norm Rules Joint Task Force
- Outreach & Instruction Task Force (AY 2017-18 only)
- Uresolver Task Force
- User Experience and Development Task Force

Normalization Rules

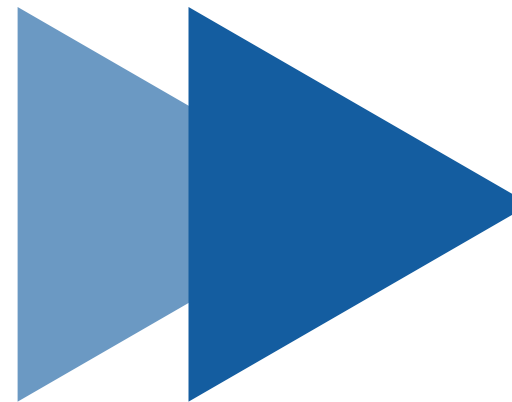
- [Change Request](#)
- [Trello Board](#) to follow norm rule progress
- [VE Norm Rule collection](#)

OneSearch Design

- CSU Primo instances
- Logos: OneSearch & CSU+
- Central package & configuration

Support, Training & Documentation

- Listserv information
- Training request form
- Primo resources and how-to's
- Git, GitHub resources
- Primo VE LibGuide
- Primo VE (Go VE webinars and documentation)
- Primo VE Tips and Tricks
- Primo VE Known Issues
- Primo VE Release Notes
- Primo VE Release Notes & Maintenance schedule
- Primo VE Sandboxes
- Primo VE Go Live Task List ([download Excel file](#))
- Primo VE Resource Types
- Creating a Search Box with Deep Links to Primo VE
- CSU Physical Search Profile Setup
- Hiding Links in the Links Section of Full Record Details
- Hide "Update Login Credentials" for SAML Authentication



Draft Link

resources

Draft ULMS Discovery page

Created by Hannah Lee
Last updated: Dec 08, 2021 - 4 min read

ULMS Discovery Committee

Goal

Description of ULMS Discovery Group

[Unified Library Management System](#)

Members

July 2021-June 2022

Past committee members

AY 2021-2022 Planning

- Meeting agendas, notes, and recordings

Contacts

- ListServ
- [Campus contacts](#)

Task Force

- ▶ Analytics Joint Task Force
- ▶ Norm Rules Joint Task Force
- ▶ Uresolver Task Force
- ▶ User Experience and Development Task Force

Past task forces

▶ Click to see all past task forces

Primo VE

Primo VE Customization

Primo VE Basics

- [How to view PNX in VE](#)
- [CSU Primo Instances](#)
- [Primo VE Sandboxes](#)
- [CALSTATE Alma Institution Codes](#)
- [Central Package & Configurations](#)
- [Git, GitHub resources](#)

▶ Tools and documentation

▶ How to - Search configurations

▶ How to - Configure View

▶ How To - Display Configuration

▶ How to - Get it (digitization, hold/booking, resource sharing, item display) configuration

▶ How to - Library card configuration

▶ How to - User configuration/authentication

▶ How to - External data sources

▶ How to - Miscellaneous

Ex Libris Documentation and Training

- ▶ Ex Libris updates, developer network
- ▶ Setting up Primo VE

Additional support and documentation

▶ Other consortial documentation

CSU Assets, etc

[Logos: OneSearch and CSU+](#)

<icons>

Primo Back Office (BO) - no longer supported

▶ Primo BO documentation



Survey results



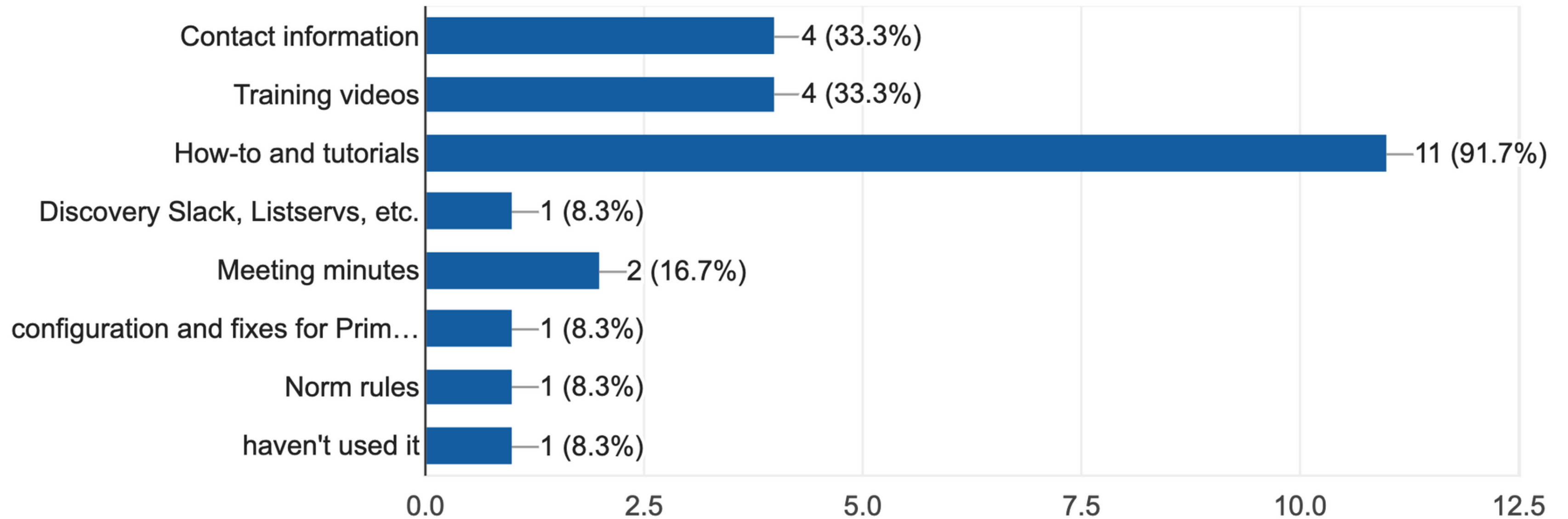
SURVEY

- Sent out: January 14
- Due date: Feb 4
- 12 responses
- Neutral to positive responses

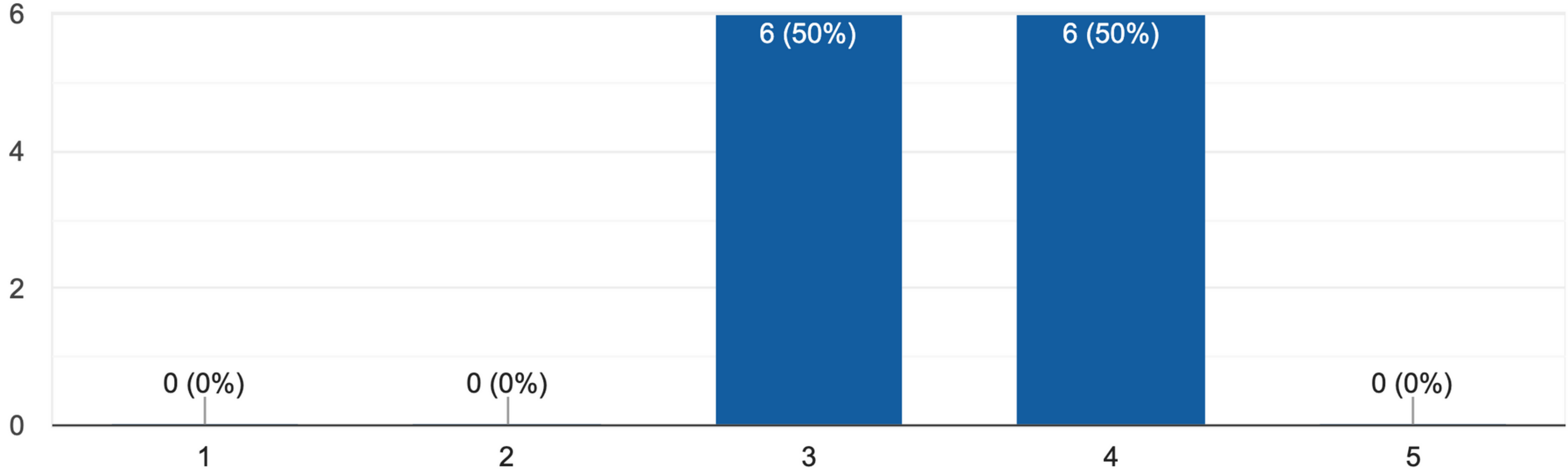
MORE INFORMATIONS



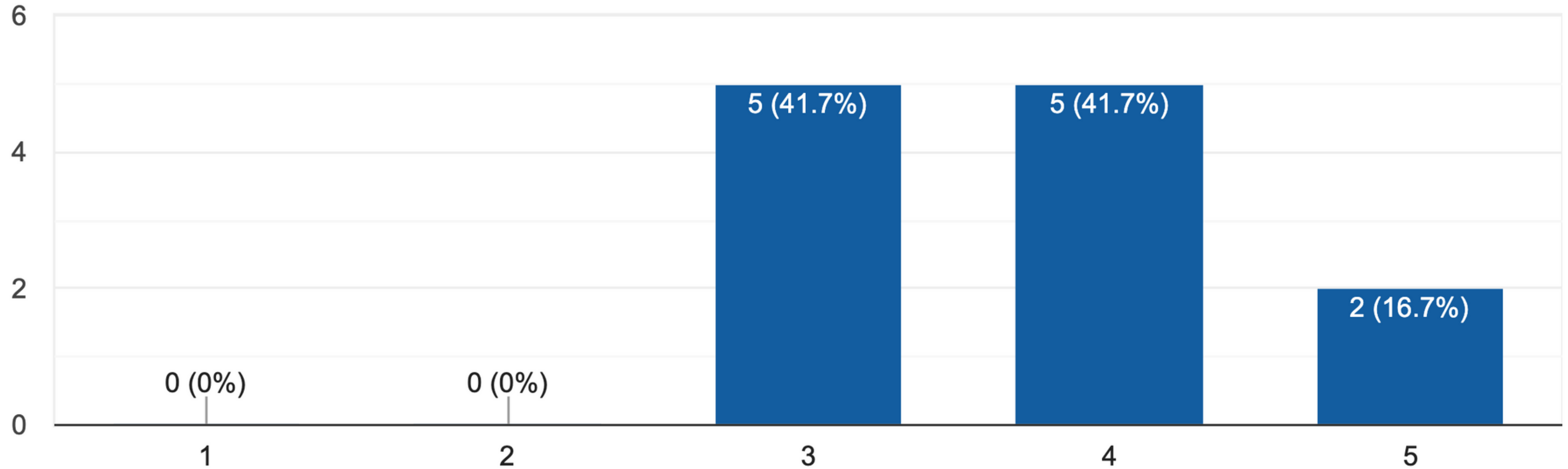
What is your primary use of the ULMS Discovery Page on Confluence?



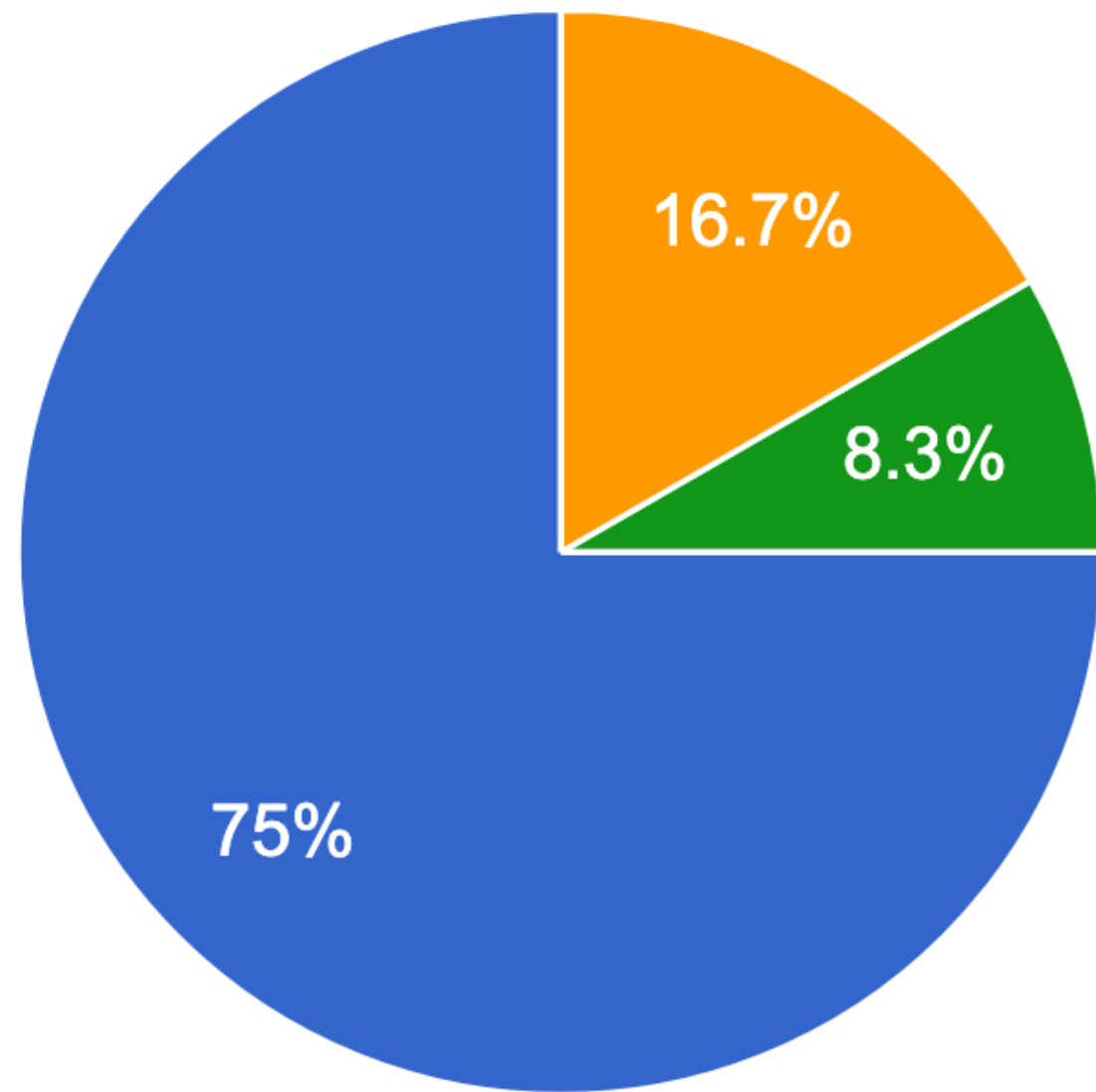
Overall look/aesthetics



Ease of navigation



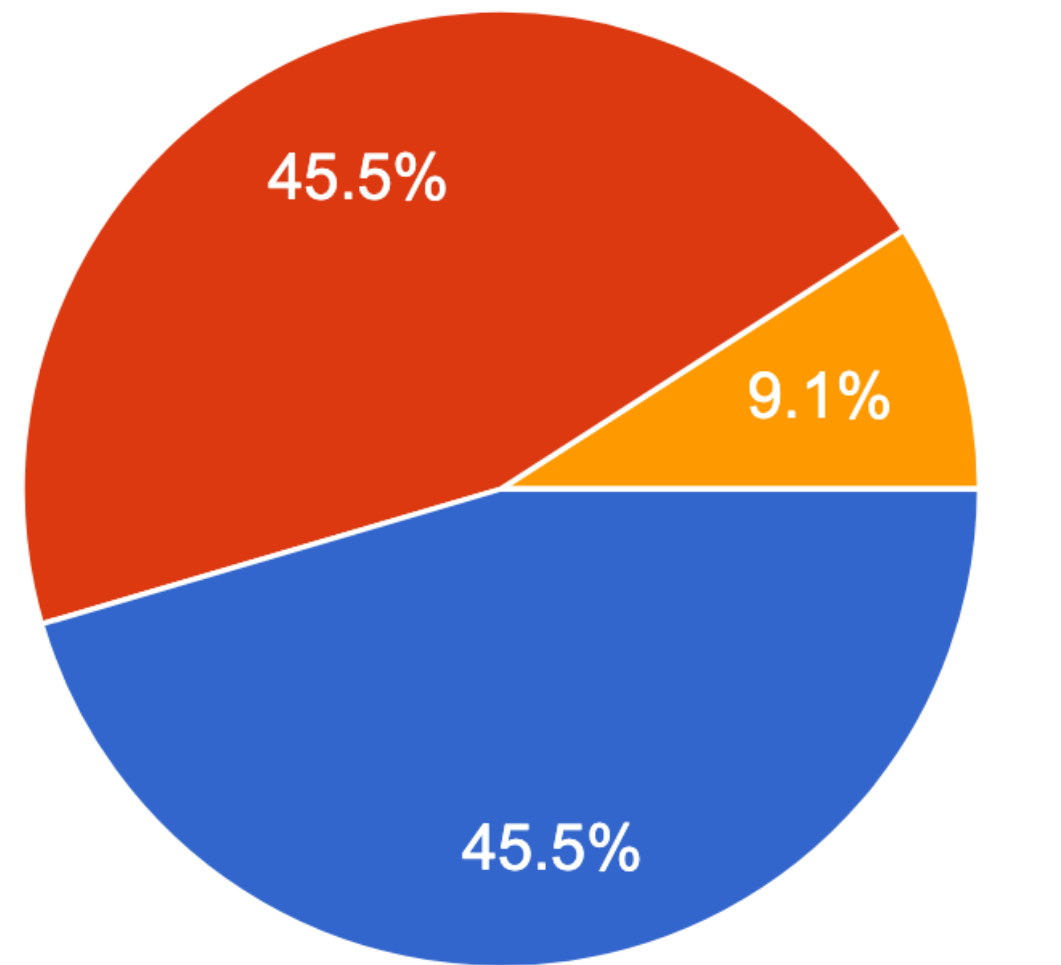
Would a link to view current CSU-wide issues on Salesforce be helpful/useful?



- Yes
- No
- Maybe
- How would that work? If it just goes to Salesforce, that's not useful to people who don't have an account. If it's taken from Salesforce, that sounds like lot of work for someone to maintain.



Feedback



- Everything looks great and I have nothing to add
- Just a general comment
- I have a specific section I want to comment on

Specific section

- Change "AY xxx Planning" section to "AY xxx Meetings Info"

General Comment

- Spacing between items (confluence limit)
 - FAQ Section?
 - Campus iteration of OneSearch
 - More developed norm rules section (and at top-level)
 - Question about links vs link in How-To
-



**ADDITIONAL
QUESTIONS/COMMENTS**

Email
Hannah Lee (halee@csudh.edu)
Christian Ward
(wardc@csus.edu)

Next Steps



Review feedback within ULMS Discovery Group



Discuss implementation
