










ID	Task Name	Duration	Start	Finish
0	Alma & Primo implementation	310.5 days?	Mon 2/3/14	Fri 4/10/15
1	Getting Ready	69 days?	Mon 2/3/14	Thu 5/8/14
34	Alma Implementation	289.5 days?	Tue 3/4/14	Fri 4/10/15
35	Phase I - Define	229 days	Tue 3/4/14	Thu 1/15/15
36	 Kick off meeting (Webex)	1 day	Thu 5/8/14	Thu 5/8/14
37	 System analysis meeting (on-site)	2 days	Thu 5/29/14	Fri 5/30/14
38	Standard sandbox provisioned	0 days	Fri 5/30/14	Fri 5/30/14
39	Access to the Alma Standard Training Sandbox granted	0 days	Fri 5/30/14	Fri 5/30/14
40	 Production environment provisioned	0 days	Fri 5/30/14	Fri 5/30/14
41	 Alma Training	161 days	Fri 5/23/14	Thu 1/1/15
42	 Training "Navigation and searching in Alma"	1 day	Fri 5/23/14	Fri 5/23/14
43	Training "User Management"	1 day	Mon 5/26/14	Mon 5/26/14
44	Follow-up functional call - Topic: "Navigation and searching in Alma" and "User Management"	0.5 days	Tue 5/27/14	Tue 5/27/14
45	Administration Fundamentals Training "Introduction and Organisational Structure"	1 day	Tue 5/27/14	Wed 5/28/14
46	 Administration Fundamentals Training "User Management"	1 day	Fri 6/27/14	Fri 6/27/14
47	Training "Fulfillment Fundamentals/Day-to-Day Operations", "Booking in Alma" (if required)	1 day	Thu 7/3/14	Thu 7/3/14
48	Follow-up functional call - Topic: Fulfillment Fundamentals/Day-to-Day Operation (and review of Booking in Alma if required)	0.5 days	Fri 7/4/14	Fri 7/4/14
49	 Administration Fundamentals Training "Fulfillment infrastructure"	1 day	Fri 7/4/14	Mon 7/7/14
50	Open access to Sandbox configuration	0 days	Mon 7/7/14	Mon 7/7/14
51	Training "Resource Management Fundamentals/Day-to Day Operations"	1 day	Mon 7/7/14	Tue 7/8/14
52	Follow-up functional call - Topic: "Resource Management Fundamentals/Day-to Day Operations"	0.5 days	Tue 7/8/14	Tue 7/8/14

Project: Alma & Primo implement Date: Tue 7/29/14	Task		Summary		External Milestone	
	Split		Project Summary		Deadline	
	Milestone		External Tasks		Progress	

ID	Task Name	Duration	Start	Finish
53	Training "Acquisitions Fundamentals, Automated workflows", "Day-to-Day Acquisitions"	1 day	Wed 7/9/14	Wed 7/9/14
54	Follow-up functional call - Topic: "Acquisitions Fundamentals, Automated workflows", "Day-to-Day Acquisitions"	0.5 days	Thu 7/10/14	Thu 7/10/14
55	Training "Managing funds and Payments"	1 day	Thu 7/10/14	Fri 7/11/14
56	Follow-up functional call - Topic: "Managing funds and Payments"	0.5 days	Fri 7/11/14	Fri 7/11/14
57	Training "More on Resource Management"	1 day	Sun 7/13/14	Sun 7/13/14
58	Follow-up functional call - Topic: "More on Resource Management"	0.5 days	Mon 7/14/14	Mon 7/14/14
59	Administration Fundamentals Training "Resource Management"	1 day	Mon 7/14/14	Tue 7/15/14
60	Training "End to End workflows for Acquiring Print Material"	1 day	Tue 7/15/14	Wed 7/16/14
61	Follow-up functional call - Topic: "End to End workflows for Acquiring Print Mat"	1 day	Wed 7/16/14	Thu 7/17/14
62	Training "Electronic Resources Fundamentals", "Day-to-Day Workflows for Electronic resources"	1 day	Thu 7/17/14	Fri 7/18/14
63	Follow-up functional call - Topic: "Electronic Resources Fundamentals", "Day-to-Day Workflows for Electronic resources"	0.5 days	Fri 7/18/14	Fri 7/18/14
64	Administration Fundamentals Training "Acquisitions Infrastructure"	1 day	Mon 7/21/14	Mon 7/21/14
65	Training "Alma and Primo"	1 day	Tue 7/22/14	Tue 7/22/14
66	Review of "Alma and Primo"	0.5 days	Wed 7/23/14	Wed 7/23/14
67	Alma Reporting Session - live Webex	0.5 days	Tue 8/26/14	Tue 8/26/14
68	Alma Analytics Training - Live WebEx	0.5 days	Thu 8/28/14	Thu 8/28/14
69	Register for certification training program	1 day	Thu 1/1/15	Thu 1/1/15
70	Alma Administration Fundamentals training completed	0 days	Tue 7/22/14	Tue 7/22/14
71	Collaborative - Network Zone training (recorded sessions)	6 days	Mon 9/8/14	Mon 9/15/14
72	Collaborative - Network Zone - question and answer sessions	2 days	Tue 9/23/14	Wed 9/24/14
73	Customer Configuration and Integration Preparations	73 days	Mon 5/12/14	Wed 8/20/14
74	Send customer "Configuration Kit"	1 hr	Mon 5/12/14	Mon 5/12/14
75	Send customer 3rd party Integrations Form	1 hr	Fri 8/1/14	Fri 8/1/14

Project: Alma & Primo implement Date: Tue 7/29/14	Task		Summary		External Milestone	
	Split		Project Summary		Deadline	
	Milestone		External Tasks		Progress	

ID	Task Name	Duration	Start	Finish
76	Return integrations form inputs	1 day	Tue 8/12/14	Tue 8/12/14
77	"Configuration Form Review" session	0.5 days	Fri 8/8/14	Fri 8/8/14
78	Adjust Configuration Form inputs	1 day	Wed 8/13/14	Wed 8/13/14
79	Configuration Form Finalize	0 days	Wed 8/20/14	Wed 8/20/14
80	Customer Configuration and Integration Preparations Completed	0 days	Wed 8/20/14	Wed 8/20/14
81	Customer Migration Test Load Preparations	29 days	Tue 6/10/14	Thu 7/17/14
82	Migration Inputs	29 days	Tue 6/10/14	Thu 7/17/14
83	Prepare migration	29 days	Tue 6/10/14	Thu 7/17/14
84	Migration Forms for RF, Milwaukee and Madison	28 days	Tue 6/10/14	Wed 7/16/14
85	P2E input files for RF, Milwaukee and Madison	1 day	Thu 7/17/14	Thu 7/17/14
86	For Voyager: Download and install AutoExtract tool	1 day	Tue 6/17/14	Tue 6/17/14
87	Return migration inputs to Ex Libris	1 day	Wed 7/16/14	Wed 7/16/14
88	Migration Forms for RF, Madison and Milwaukee	1 day	Wed 7/16/14	Wed 7/16/14
89	P2E input files for RF, Madison and Milwaukee	1 day	Wed 7/16/14	Wed 7/16/14
90	Customer Migration Test Load Preparations completed (for RF, Madison and Mi	0 days	Wed 7/16/14	Wed 7/16/14
91	Ex Libris Migration Test Load Preparations for RF, Madison and Milwaukee)	1 day	Wed 7/16/14	Wed 7/16/14
92	Production Environment Preparation - Pre-test loads	229 days	Tue 3/4/14	Thu 1/15/15
93	Data migration - Pre-test load (RF, Madison, Milwaukee, NZ) (bib data only)	63 days	Tue 3/4/14	Thu 5/29/14
94	Testing UB Development	11 days	Tue 7/1/14	Mon 7/14/14
95	Migration team - test diagnostic of UB script for RF, Madison, Milwaukee)	1 day	Sun 7/13/14	Sun 7/13/14
96	Re-deploy of new auto-extract package	10 days	Mon 7/14/14	Fri 7/25/14
97	Deilvery of Migration forms for RF, Madison, and Milwaukee, Delivery of ERM d	1 day	Wed 7/16/14	Wed 7/16/14
98	Download new auto-extract package and start auto-extract for RF, Madison and	3 days	Fri 7/25/14	Tue 7/29/14
99	Migration of RF, Madison, Milwaukee (full data) (UB migration) and NZ	18 days	Mon 7/28/14	Wed 8/20/14
100	Publish from Alma to Primo and configure RF, Milwaukee and Madison	4 days	Thu 8/21/14	Tue 8/26/14
101	Review of data by RF, Milwaukee and Madison and NZ	15 days	Thu 8/21/14	Wed 9/10/14
102	All data migration feedback submitted to ExL	1 day	Wed 9/10/14	Wed 9/10/14

Project: Alma & Primo implement Date: Tue 7/29/14	Task		Summary		External Milestone	
	Split		Project Summary		Deadline	
	Milestone		External Tasks		Progress	

ID	Task Name	Duration	Start	Finish
103	Data Migration - Test Load	88 days	Tue 9/16/14	Thu 1/15/15
104	Install latest Auto-extract package	2 days	Mon 9/29/14	Tue 9/30/14
105	Voyager - AutoExtract/transform full data and upload to regional EXL FTP	3 days	Wed 10/1/14	Fri 10/3/14
106	Deliver migration forms for all institutions and ERM data	4 days	Tue 9/16/14	Fri 9/19/14
107	SFX - Extract/transform full data and upload to regional EXL FTP	3 days	Tue 9/30/14	Thu 10/2/14
108	Test load (full data) incl. internal testing on migration environment	14 days	Fri 10/3/14	Wed 10/22/14
109	Copy institution from migration server to production environment along with migration statistics report	0.5 days	Fri 10/24/14	Fri 10/24/14
110	Test Load Completed	0 days	Fri 10/24/14	Fri 10/24/14
111	Review of full test load by Wisconsin sites, reporting migration issues	23 days	Mon 10/27/14	Wed 11/26/14
112	Review functionality, integration with full test load	38 days	Tue 11/25/14	Thu 1/15/15
113	All migration issues reported to ExL	1 day	Fri 12/19/14	Fri 12/19/14
114	Alma Initial Configuration	14 days	Mon 8/25/14	Fri 9/12/14
115	Alma initial configuration on PROD environment	5 days	Mon 8/25/14	Fri 8/29/14
116	End to end internal testing on PROD environment	1 day	Fri 8/29/14	Fri 8/29/14
117	Verify Alma Analytics and USTAT creation	1 day	Mon 9/1/14	Mon 9/1/14
118	Production Environment Preparation Completed	0 days	Fri 9/5/14	Fri 9/5/14
119	Alma Initial Configuration Completed	0 days	Fri 9/12/14	Fri 9/12/14
120	Define Phase Completed	0 days	Fri 9/5/14	Fri 9/5/14
121	Phase II - Build	150 days?	Tue 7/15/14	Mon 2/9/15
122	Customer access to Alma Production provided (email)	0 days	Fri 9/5/14	Fri 9/5/14
123	Authentication & Integrations	40 days	Fri 8/22/14	Thu 10/16/14
124	"Alma Integrations Form" Initial Review Session	0.5 days	Fri 8/22/14	Fri 8/22/14
125	Integration Setup	1.5 mons	Fri 9/5/14	Thu 10/16/14
126	Integrations Setup Completed	0 days	Thu 10/16/14	Thu 10/16/14

Project: Alma & Primo implement Date: Tue 7/29/14	Task		Summary		External Milestone	◆
	Split		Project Summary		Deadline	↓
	Milestone	◆	External Tasks		Progress	

ID	Task Name	Duration	Start	Finish
127	Customer Functional and Data Review & Testing	42 days	Fri 10/24/14	Mon 12/22/14
128	Testing Migrated Data	1.5 mons	Fri 10/24/14	Thu 12/4/14
129	Migration fixes according to feedback (to be applied in cutover load)	5 days	Fri 12/5/14	Thu 12/11/14
130	Testing Alma functionality per customer workflows	1.5 mons	Fri 10/24/14	Thu 12/4/14
131	Alma Workshop (on-site)	4 days	Mon 10/27/14	Thu 10/30/14
132	Configuration adjustments	0.5 mons	Fri 10/31/14	Thu 11/13/14
133	Customer Functional and Data Review & Testing Completed	0 days	Thu 12/4/14	Thu 12/4/14
134	Go-live readiness checklist review with each institution (web sessions to be sched	12 days	Fri 12/5/14	Mon 12/22/14
135	Primo implementation	49 days?	Tue 7/15/14	Fri 9/19/14
136	Production Server Setup	17 days	Tue 7/15/14	Wed 8/6/14
137	Allocate and set up Primo Production environment	15 days	Tue 7/15/14	Mon 8/4/14
138	Install Primo on Production Server	1 day	Tue 8/5/14	Tue 8/5/14
139	Perform Post-Installation Tasks	1 day	Wed 8/6/14	Wed 8/6/14
140	Primo Installed	0 days	Wed 8/6/14	Wed 8/6/14
141	Primo Configuration	5 days	Wed 8/6/14	Tue 8/12/14
142	Configure Primo According to Production Primo	5 days	Wed 8/6/14	Tue 8/12/14
143	Authentication / PDS	12 days	Thu 8/7/14	Fri 8/22/14
144	Alma Data - publishing and loading	5 days	Thu 8/21/14	Wed 8/27/14
145	Publish Alma data	2 days	Thu 8/21/14	Fri 8/22/14
146	Load Alma data into Primo	2 days	Mon 8/25/14	Tue 8/26/14
147	Internal testing	1 day	Wed 8/27/14	Wed 8/27/14
148	Services page setup	2 days	Thu 8/28/14	Fri 8/29/14
149	Set u-resolver base URL in Alma	1 day	Thu 8/28/14	Thu 8/28/14
150	Internal testing	1 day	Fri 8/29/14	Fri 8/29/14
151	Primo setup completed	0 days	Fri 8/29/14	Fri 8/29/14
152	Review Primo	15 days?	Mon 9/1/14	Fri 9/19/14
153	Handover Primo session with Wisconsin	1 day?	Mon 9/1/14	Mon 9/1/14










Project: Alma & Primo implement Date: Tue 7/29/14	Task		Summary		External Milestone	
	Split		Project Summary		Deadline	
	Milestone		External Tasks		Progress	

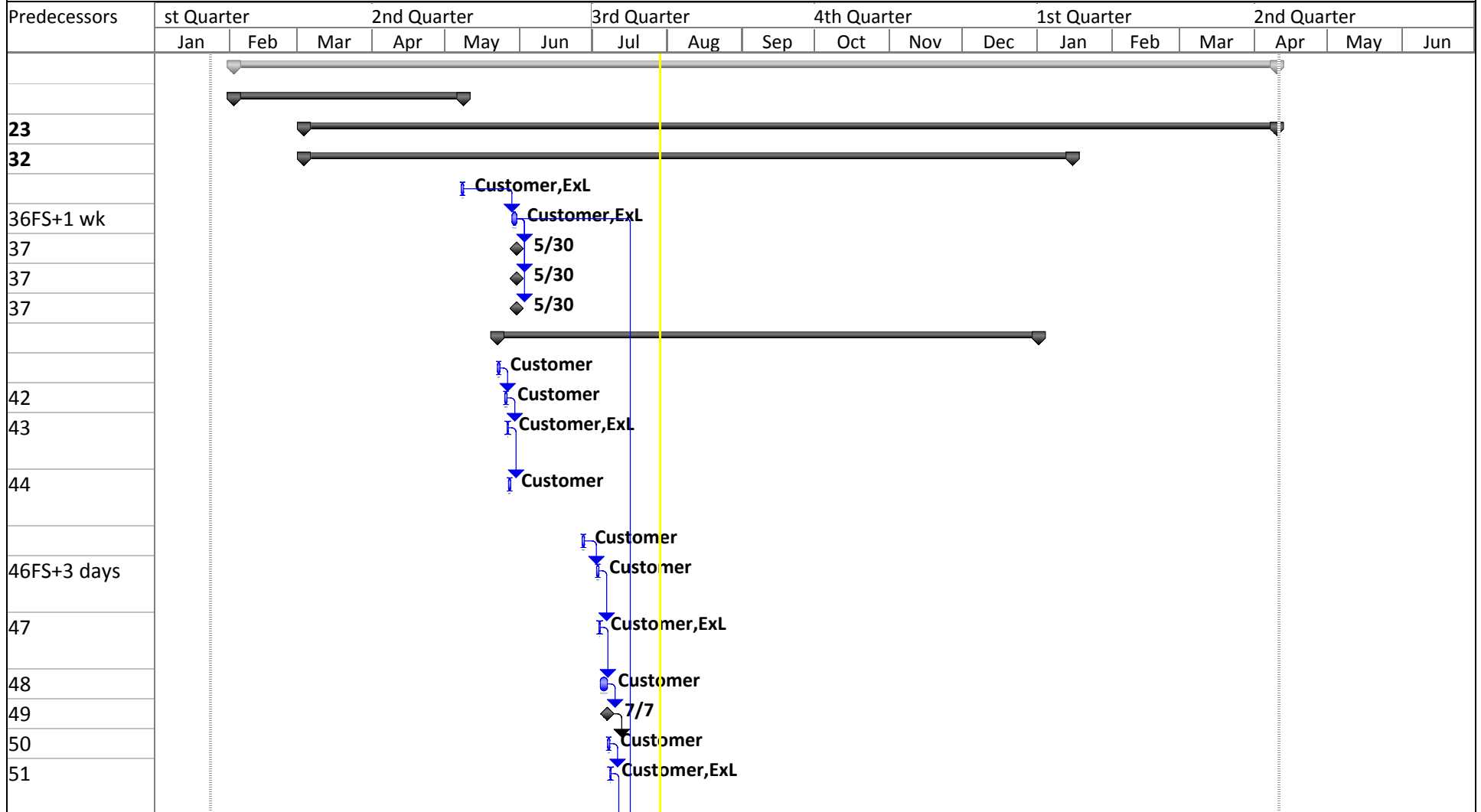
ID	Task Name	Duration	Start	Finish
154	Check Primo and Provide Feedback	15 days	Mon 9/1/14	Fri 9/19/14
155	Support During Customer Checks	10 days	Mon 9/1/14	Fri 9/12/14
156	Adjust css, html for Static Tiles	5 days	Mon 9/1/14	Fri 9/5/14
157	Deliver Feedback to EXL	3 days	Mon 9/15/14	Wed 9/17/14
158	Final Tuning of Configuration Based on Customer Feedback	2 days	Mon 9/15/14	Tue 9/16/14
159	Acceptance of Primo Configuration	0 days	Tue 9/16/14	Tue 9/16/14
160	Synchronization with Test system	1 day	Wed 9/17/14	Wed 9/17/14
161	Primo Work Completed	0 days	Wed 9/17/14	Wed 9/17/14
162	Customer Staff Training	10 days	Fri 11/21/14	Thu 12/4/14
163	Customer Staff Training	10 days	Fri 11/21/14	Thu 12/4/14
164	Cutover Preparation	7 days	Tue 1/20/15	Wed 1/28/15
165	Provide Getting ready for Alma Cutover document and Alma Go-Live Readiness checklist	0 days	Tue 1/20/15	Tue 1/20/15
166	Complete and return Alma Go-Live Readiness Checklist	1 day	Tue 1/20/15	Tue 1/20/15
167	Prepare detailed cutover plan based on cutover template	1 day	Wed 1/21/15	Wed 1/21/15
168	Distribute detailed cutover plan to customer and internally	1 day	Thu 1/22/15	Thu 1/22/15
169	Adjust cutover plan based on customer and internal feedback	1 day	Wed 1/28/15	Wed 1/28/15
170	Cutover Plan Finalized	0 days	Wed 1/28/15	Wed 1/28/15
171	Cut over (Cutover steps are tracked in Cutover Plan, not in Project Plan)	13 days	Thu 1/22/15	Mon 2/9/15
172	Alma Administration Certification (via WebEx)	2 days	Thu 1/22/15	Fri 1/23/15
173	Phase III - Deploy	43.5 days?	Mon 2/9/15	Fri 4/10/15
174	GO LIVE (Alma and Primo)	43.5 days?	Mon 2/9/15	Fri 4/10/15
175	GO LIVE (Alma and Primo)	0 days?	Mon 2/9/15	Mon 2/9/15
176	Enable Alma job scheduler	1 day	Tue 2/10/15	Tue 2/10/15
177	Followup with source link resolver providers and ensure they have updated with new Alma URL	1 day	Wed 2/11/15	Wed 2/11/15
178	Customer confirmation that e-mails and s/ftp server may be enabled	1 day	Tue 2/10/15	Tue 2/10/15

Project: Alma & Primo implement Date: Tue 7/29/14	Task		Summary		External Milestone	
	Split		Project Summary		Deadline	
	Milestone		External Tasks		Progress	

ID	Task Name	Duration	Start	Finish
179	Enable allowed email, notifications and s/ftp server in Alma configuration	1 day	Tue 2/10/15	Tue 2/10/15
180	Post Go-Live Consultancy (on-site)	1 day	Wed 3/11/15	Wed 3/11/15
181	Complete initial post go-live Alma health-check list	1 day	Thu 3/12/15	Thu 3/12/15
182	Premium Sandbox Initial Creation (if included in project scope)	1 day	Fri 3/13/15	Fri 3/13/15
183	Refresh of Primo Sandbox with Alma data (if included in project scope)	2 days	Mon 3/16/15	Tue 3/17/15
184	Complete final post go-live Alma health-check list	1 day	Thu 4/9/15	Thu 4/9/15
185	Switch to Alma Support	0.5 days	Fri 4/10/15	Fri 4/10/15
186	Deploy Phase completed	0 days	Fri 4/10/15	Fri 4/10/15
187	Project Completed	0 days	Fri 4/10/15	Fri 4/10/15

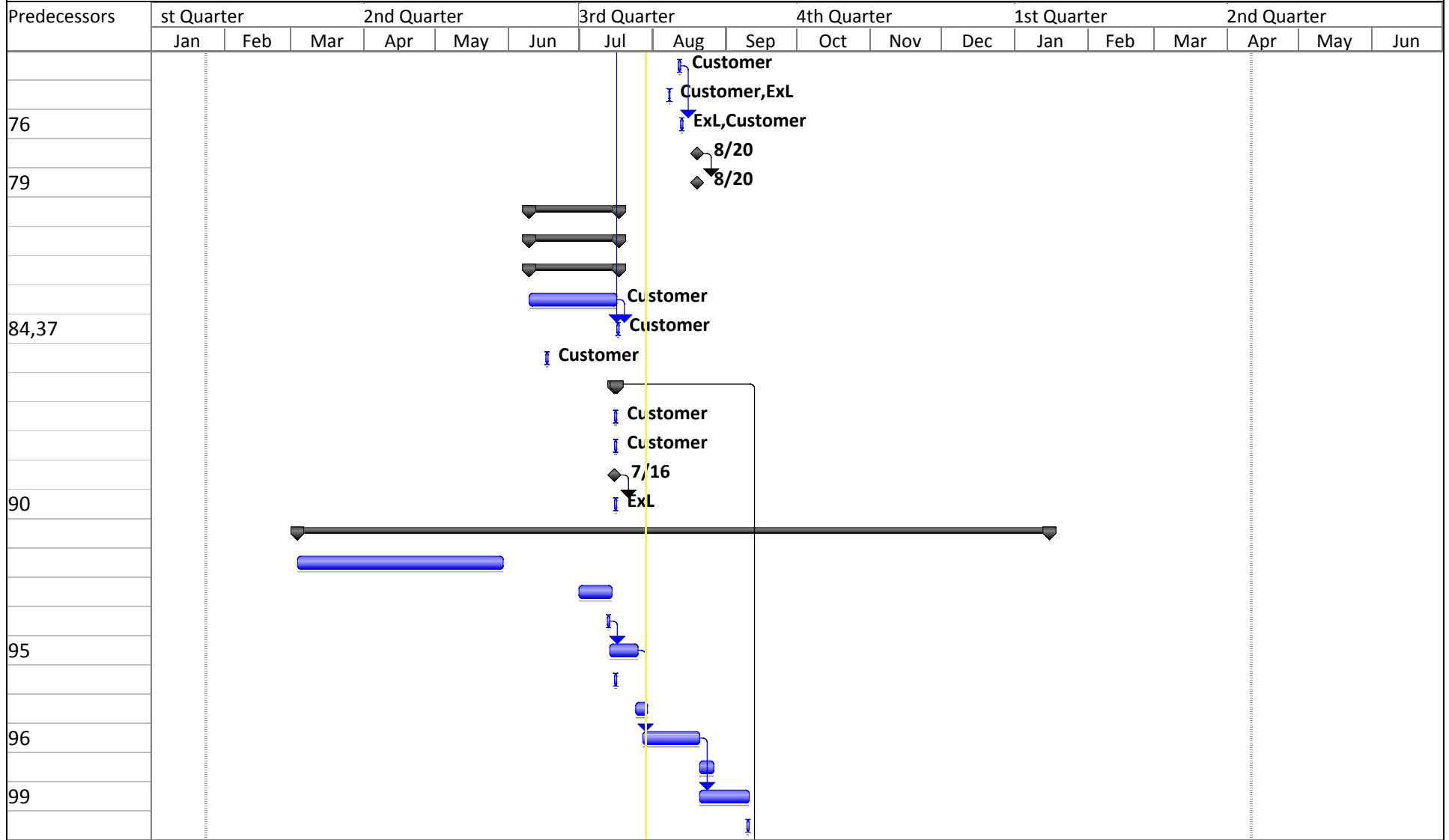
Project: Alma & Primo implement
Date: Tue 7/29/14

Task		Summary		External Milestone	
Split		Project Summary		Deadline	
Milestone		External Tasks		Progress	



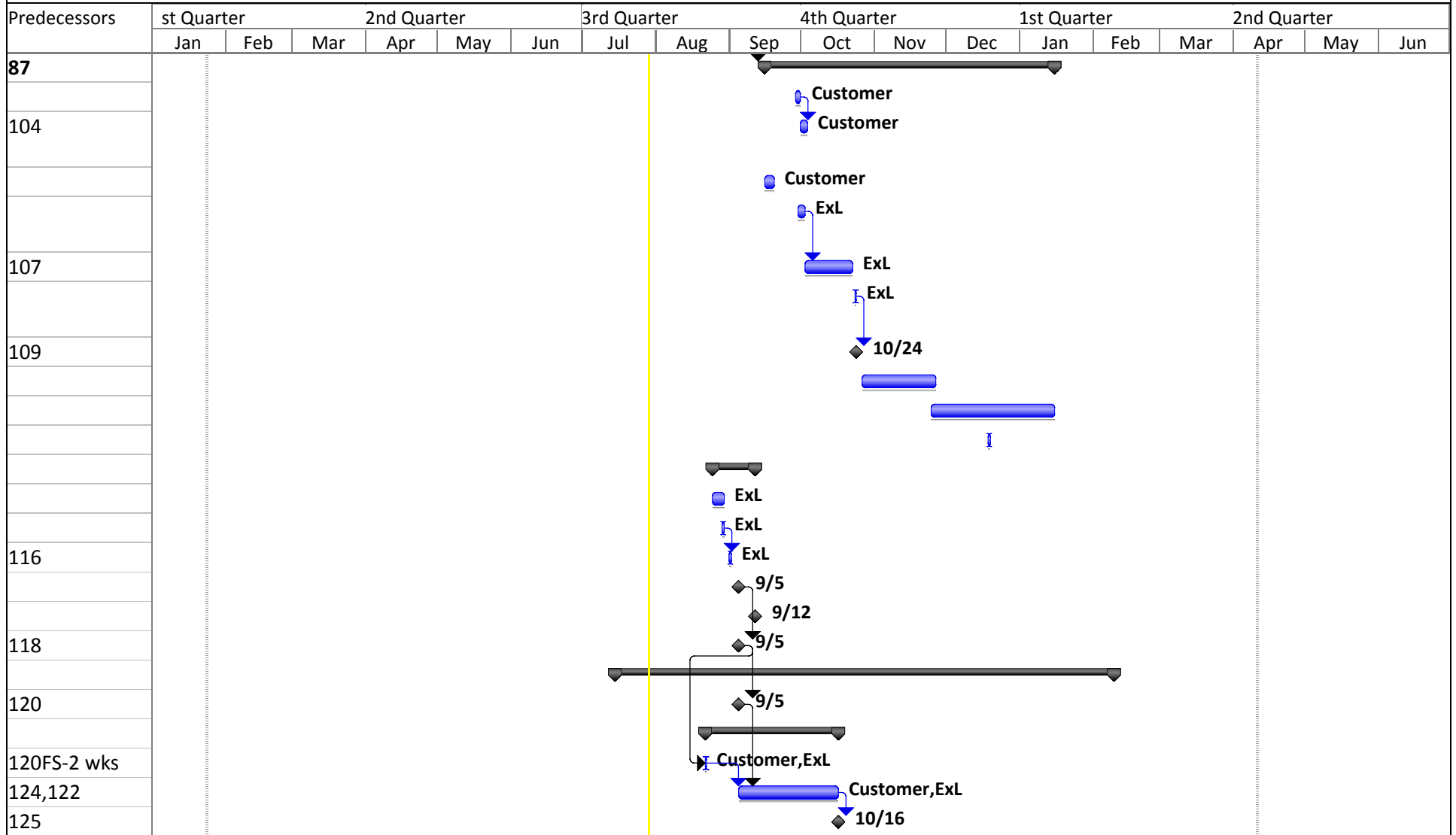
Project: Alma & Primo implement
Date: Tue 7/29/14

Task		Summary		External Milestone	
Split		Project Summary		Deadline	
Milestone		External Tasks		Progress	



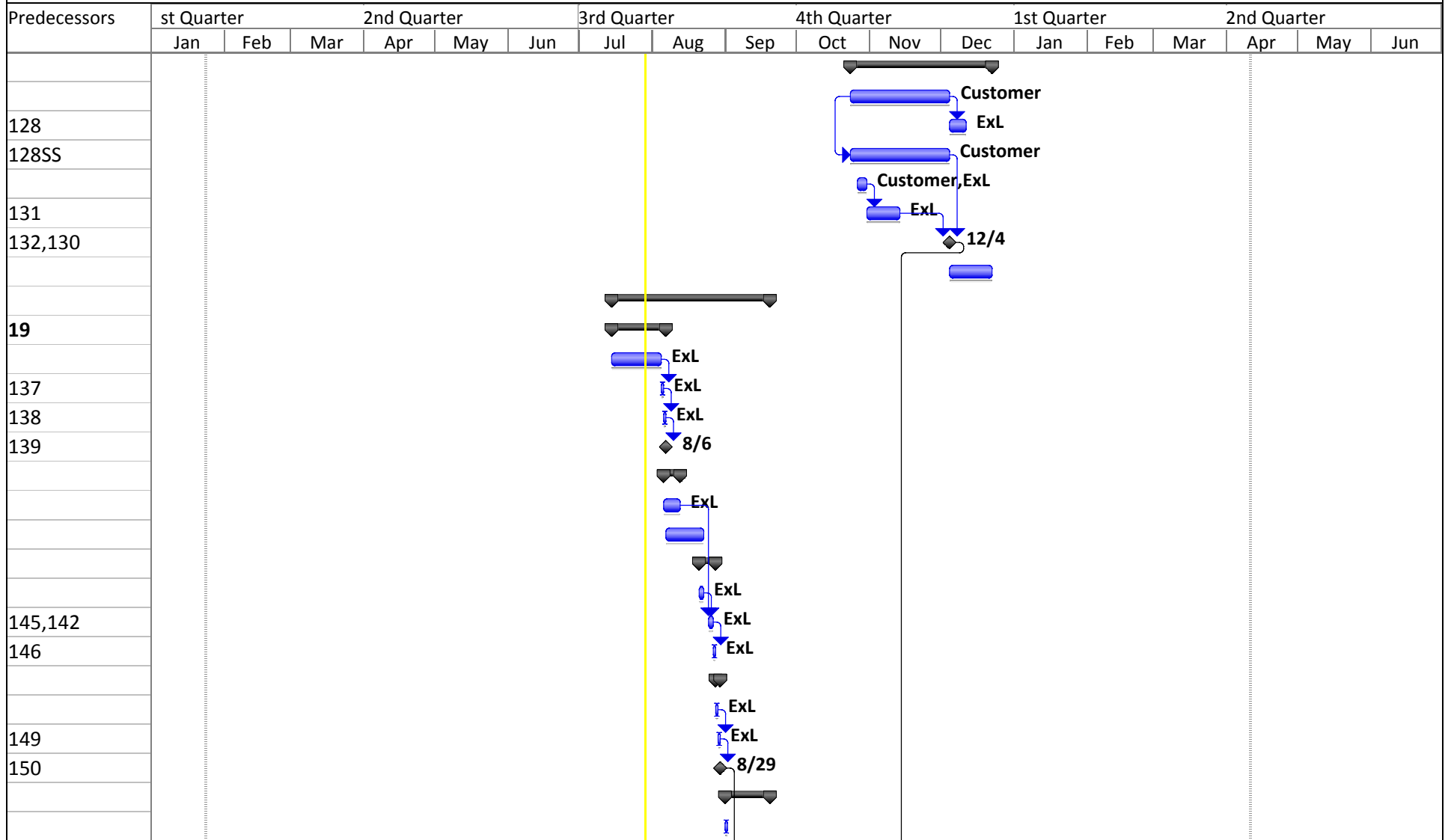
Project: Alma & Primo implement
Date: Tue 7/29/14

Task		Summary		External Milestone	
Split		Project Summary		Deadline	
Milestone		External Tasks		Progress	



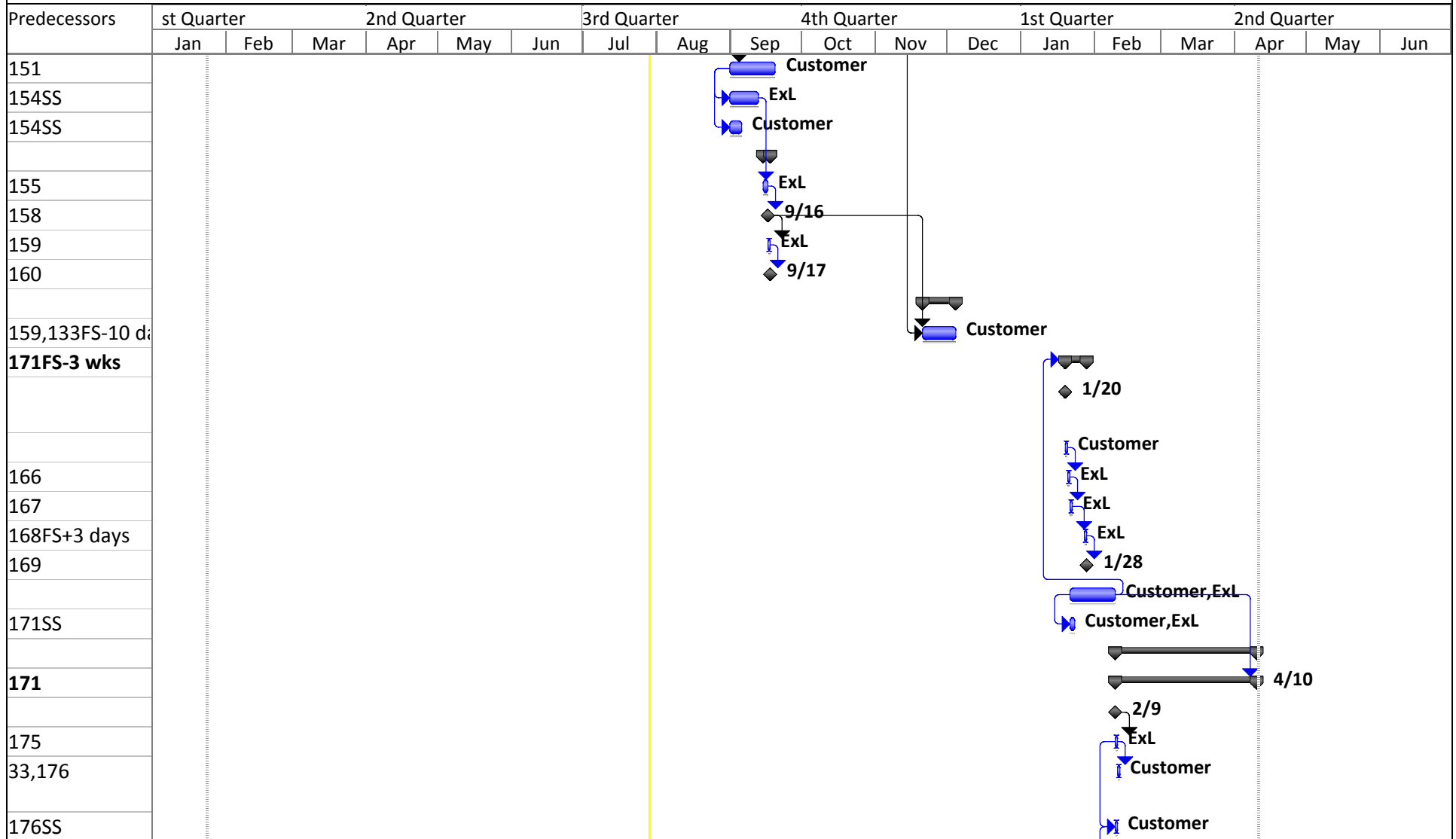
Project: Alma & Primo implement
Date: Tue 7/29/14

Task		Summary		External Milestone	
Split		Project Summary		Deadline	
Milestone		External Tasks		Progress	



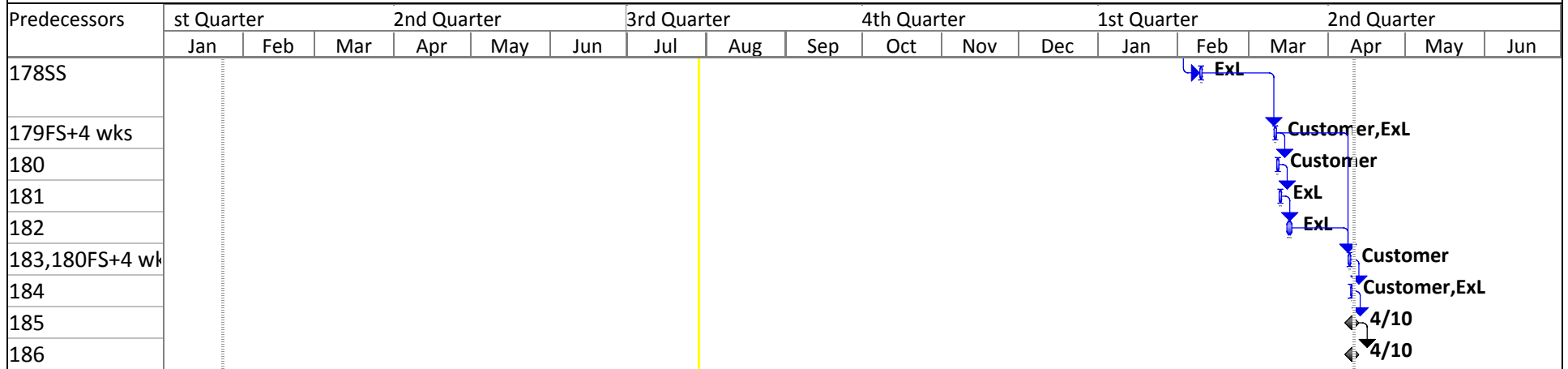
Project: Alma & Primo implement
Date: Tue 7/29/14

Task		Summary		External Milestone	
Split		Project Summary		Deadline	
Milestone		External Tasks		Progress	



Project: Alma & Primo implement
Date: Tue 7/29/14

- Task Summary External Milestone
- Split Project Summary Deadline
- Milestone External Tasks Progress



Project: Alma & Primo implement Date: Tue 7/29/14	Task		Summary		External Milestone	
	Split		Project Summary		Deadline	
	Milestone		External Tasks		Progress	